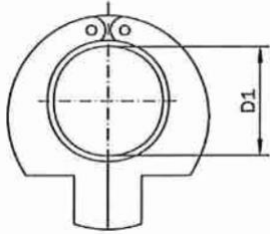


## PIPE SAW TOOL FOR PIPE DIN EN 10357, SERIES D, T304



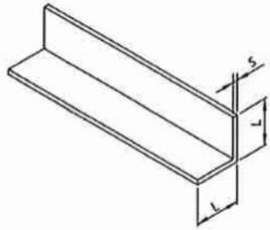
DN Inch	D1	Weight (kg)	Article No.
1"	25.4	0.72	<b>7003 8000 10094</b>
1 ¼"	31.8	0.62	<b>7003 8000 11494</b>
1 ½"	38.1	0.85	<b>7003 8000 11294</b>
2"	50.8	0.99	<b>7003 8000 20094</b>
2 ½"	63.5	2.15	<b>7003 8000 21294</b>
3"	76.2	2.50	<b>7003 8000 30094</b>
4"	101.6	2.75	<b>7003 8000 40094</b>

Please contact sales team if Dimensions are critical - Dimensions are Indicative

Other Dimensions on Request

## ANGLE BAR

T304 6mtr lengths



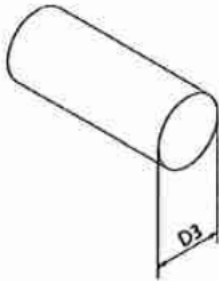
B1	S	Weight (kg/m)	Article No.
20	3	0.877	<b>6733</b>
25	3	1.21	<b>6736</b>
30	3	1.351	<b>6742</b>
40	3	1.99	<b>40702</b>
40	5	2.963	<b>6751</b>
50	3	2.5	<b>31760</b>
50	5	3.753	<b>6754</b>
50	6	4.55	<b>6757</b>
60	6	5.404	<b>6760</b>
80	6	7.94	<b>32006</b>
100	6	9.32	<b>6761</b>

Please contact sales team if Dimensions are critical - Dimensions are Indicative

Other Dimensions on Request

## ROUND BAR

### T304 6mtr lengths



D3	Weight (kg/m)	Article No.
6	0.222	<b>18103</b>
8	0.395	<b>18105</b>
10	0.617	<b>18107</b>
12	0.888	<b>18109</b>
16	1.578	<b>18113</b>
20	2.466	<b>18117</b>

Please contact sales team if Dimensions are critical - Dimensions are Indicative

Other Dimensions on Request