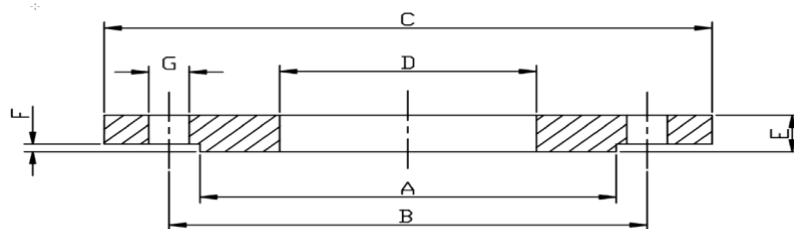


STAINLESS STEEL FORGED FLANGES

ASTM A182 TYPE 01B RAISED FACE SLIP ON FLANGES PN16 EN1092-1



PIPE SIZE	DN	A	B	C	D	E	F	G	NO. OF HOLE	Bolts	kg/pc	304L	316L
1/2"	15	45	65	95	22	16	2	14	4	4 x M12	0.68	29100	29115
3/4"	20	58	75	105	27.5	18	2	14	4	4 x M12	0.94	29101	29116
1"	25	68	85	115	34.5	18	2	14	4	4 x M12	1.11	29102	29117
1 1/4"	32	78	100	140	43.5	18	2	18	4	4 x M16	1.62	29099	29114
1 1/2"	40	88	110	150	49.5	18	3	18	4	4 x M16	1.86	29103	29118
2"	50	102	125	165	61.5	20	3	18	4	4 x M16	2.47	29104	29119
2 1/2"	65	122	145	185	74.7	20	3	18	4	4 x M16	3.00	29105	29120
3"	80	138	160	200	90.5	20	3	18	8	8 x M16	3.79	29106	29121
4"	100	158	180	220	116	22	3	18	8	8 x M16	4.03	29107	29122
5"	125	188	210	250	143.8	22	3	18	8	8 x M16	5.46	29112	29127
6"	150	212	240	285	170.5	22	3	22	8	8 x M20	6.57	29108	29123
8"	200	268	295	340	221.5	24	3	22	12	12 x M20	9.70	29109	29124
10"	250	320	355	405	276.4	26	3	26	12	12 x M24	14.3	29110	29125
12"	300	378	410	460	327	32	4	25	12	12 x M24	18.9	29111	29126

1/2"- 1 1/2" Conforms to PN10/PN16/PN25/PN40

2"- 6" Conforms to PN10/PN16

8 - 12 Conforms to PN16

Please contact sales team if Dimensions are critical - Dimensions are Indicative