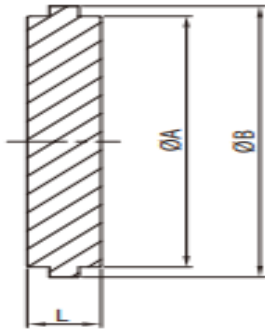


## DIN 11851 UNIONS

### DIN 11851 Blank Liner 316L - Ra ≤0.8

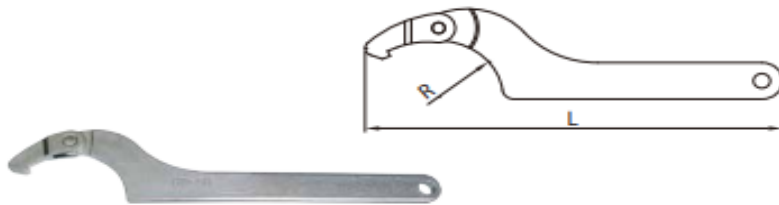


Size	A	B	L	Weight (Kgs)	Item No.
<b>DN10</b>	18.00	22.00	9.00	0.02	<b>56600</b>
<b>DN15</b>	24.00	28.00	9.00	0.04	<b>56601</b>
<b>DN20</b>	30.00	36.00	11.00	0.07	<b>56602</b>
<b>DN25</b>	35.00	44.00	13.00	0.13	<b>56603</b>
<b>DN32</b>	41.00	50.00	13.00	0.17	<b>56604</b>
<b>DN40</b>	48.00	56.00	13.00	0.25	<b>56605</b>
<b>DN50</b>	61.00	68.00	14.00	0.38	<b>56606</b>
<b>DN65</b>	79.00	86.00	16.00	0.69	<b>56607</b>
<b>DN80</b>	93.00	100.00	16.00	0.94	<b>56612</b>
<b>DN100</b>	114.00	121.00	20.00	1.34	<b>56609</b>
<b>DN125</b>	137.00	150.00	22.00	1.68	<b>56610</b>
<b>DN150</b>	163.00	176.00	24.00	4.30	<b>56611</b>

Please contact sales team if Dimensions are critical - Dimensions are Indicative

## DIN 11851 UNIONS

### DIN Spanner 304



Size	R	L	Weight (Kgs)	Item No.
<b>DN10 - 20</b>	22.00	175.00	0.07	<b>56496</b>
<b>DIN25 - 40</b>	31.00	247.00	0.23	<b>56497</b>
<b>DIN50 - 100</b>	49.00	290.00	0.32	<b>56498</b>
<b>DIN 125 - 200</b>	82.50	515.00	0.92	<b>56499</b>

Please contact sales team if Dimensions are critical - Dimensions are Indicative