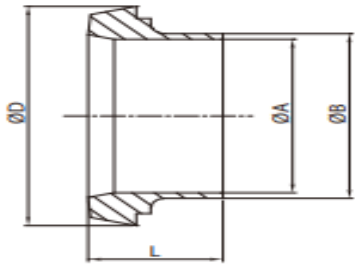


## DIN 11851 UNIONS

### DIN 11851 Imperial Long Liner 316L - ID Ra ≤0.8

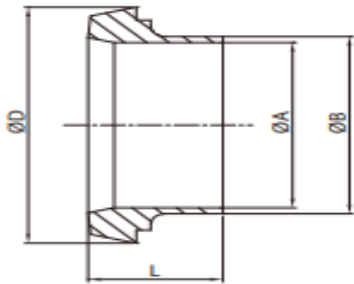


Size	A	B	D	L	Weight (Kgs)	Item No.
1"	22.10	25.40	44.00	22.00	0.07	<b>56212</b>
1 1/2"	34.80	38.10	56.00	26.00	0.11	<b>56213</b>
2"	47.50	50.80	68.00	28.00	0.15	<b>56214</b>
2 1/2"	60.20	63.50	86.00	32.00	0.28	<b>56215</b>
3"	72.90	76.20	100.00	37.00	0.33	<b>56218</b>
4"	97.60	101.60	121.00	44.00	0.55	<b>56217</b>

Please contact sales team if Dimensions are critical - Dimensions are Indicative

## DIN 11851 UNIONS

### DIN 11851 Metric Long Liner 316L - ID Ra ≤0.8



Size	A	B	D	L	Weight (Kgs)	Item No.
<b>DN10</b>	10.00	13.00	22.50	17.00	0.02	<b>56200</b>
<b>DN15</b>	16.00	19.00	28.50	17.00	0.03	<b>56201</b>
<b>DN20</b>	20.00	23.00	36.50	18.00	0.06	<b>56202</b>
<b>DN25</b>	26.00	29.00	44.00	22.00	0.08	<b>56203</b>
<b>DN32</b>	32.00	35.00	50.00	25.00	0.10	<b>56204</b>
<b>DN40</b>	38.00	41.00	56.00	26.00	0.12	<b>56205</b>
<b>DN50</b>	50.00	53.00	68.50	28.00	0.17	<b>56206</b>
<b>DN65</b>	66.00	70.00	80.00	30.00	0.29	<b>56207</b>
<b>DN80</b>	81.00	85.00	100.00	37.00	0.35	<b>56208</b>
<b>DN100</b>	100.00	104.00	121.00	44.00	0.57	<b>56209</b>
<b>DN125</b>	125.00	129.00	150.00	34.00	0.77	<b>56210</b>
<b>DN150</b>	150.00	154.00	176.00	37.00	1.01	<b>56211</b>

Please contact sales team if Dimensions are critical - Dimensions are Indicative