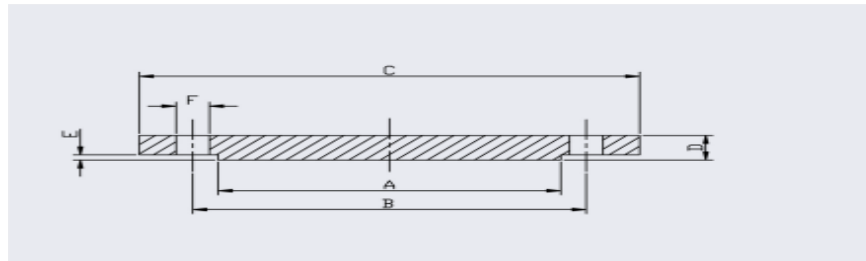


## STAINLESS STEEL FORGED FLANGES

ASTM A182 TYPE 05B RAISED FACE BLIND FLANGES PN16 EN1092-1



PIPE SIZE	DN	A	B	C	D	E	F	BOLTS	NO. OF HOLE	Kg/pc	304L	316L
1/2"	15	45	65	95	16	2	14	4 x M12	4	0.72	41700	31799
3/4"	20	58	75	105	18	2	14	4 x M12	4	1.01	41701	31797
1"	25	68	85	115	18	2	14	4 x M12	4	1.23	41702	31795
1 1/4"	32	78	100	140	18	2	18	4 x M16	4	1.80	41703	31801
1 1/2"	40	88	110	150	18	3	18	4 x M16	4	2.09	41704	31791
2"	50	102	125	165	18	3	18	4 x M16	4	2.88	41705	31789
2 1/2"	65	122	145	185	18	3	18	4 x M16	4	3.66	41706	31791
3"	80	138	160	200	20	3	18	8 x M16	8	4.77	41707	31785
4"	100	158	180	220	20	3	18	8 x M16	8	5.65	41708	31786
5"	125	188	210	250	22	3	18	8 x M16	8	8.42	41709	31802
6"	150	212	240	285	22	3	22	8 x M20	8	10.40	41710	31787
8"	200	268	295	340	24	3	22	12 x M20	12	16.20	41711	31788
10"	250	320	355	405	24	3	26	12 x M24	12	26.60	41712	317792
12"	300	378	410	460	32	4	26	12 x M24	12	35.10	41713	31796

1/2" - 1 1/2" Conforms to PN10/PN16/PN25/PN40

2" - 6" Conforms to PN10/PN16

8" - 12" Conforms to PN16

Please contact sales team if Dimensions are critical - Dimensions are Indicative