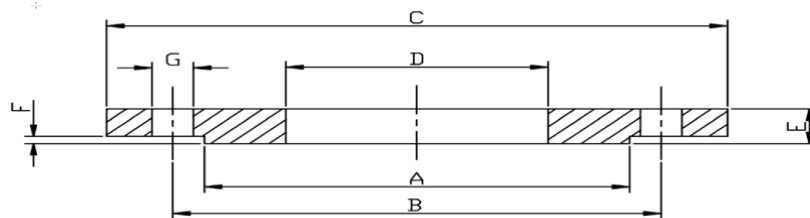


STAINLESS STEEL FORGED FLANGES

ASTM A182 TYPE 01B RAISED FACE SLIP ON FLANGES PN10 EN1092-1



PIPE SIZE	DN	A	B	C	D	E	F	G	NO. OF HOLE	Bolts	kg/pc	304L	316L
8"	200	268	295	340	221.5	24	3	22	8	8 x M20	9.28	29128	29129
10"	250	320	350	395	276.4	26	3	22	12	12 x M20	11.85	29130	29132
12"	300	370	400	445	327.5	26	4	22	12	12 x M20	13.61	29133	29134

Please contact sales team if Dimensions are critical - Dimensions are Indicative