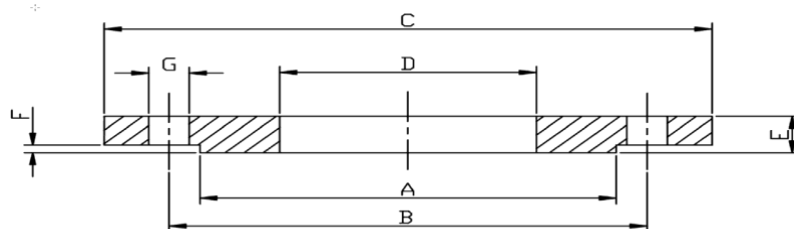


STAINLESS STEEL FORGED FLANGES

ASTM A182 TYPE 01B RAISED FACE SLIP ON FLANGES PN25/40 EN1092-1



PIPE SIZE	DN	A	B	C	D	E	F	G	NO. OF HOLE	Bolts	kg/pc	316L
2"	50	102	125	165	61.5	20	3	18	4	4 X M16	3.00	29210
2 1/2"	65	122	145	185	74.7	22	3	18	8	8 X M16	3.80	29211
3"	80	138	160	200	90.5	24	3	18	8	8 X M16	4.90	29212
4"	100	162	190	135	116	26	3	22	8	8 X M16	6.50	29213
5"	125	188	220	270	141.5	28	3	22	8	8 X M24	8.95	29214
6"	150	218	250	300	170.5	30	3	26	8	8 X M24	13.15	29215
8"	200	278	310	360	221.5	32	3	26	12	12 X M24	13.8	29216

2" - 6" Conforms to PN25/PN40
 8" Conforms to PN40

Please contact sales team if Dimensions are critical - Dimensions are Indicative