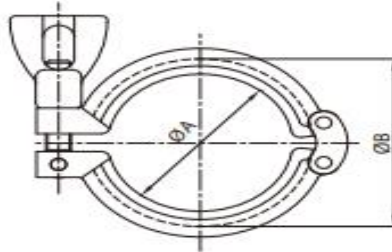


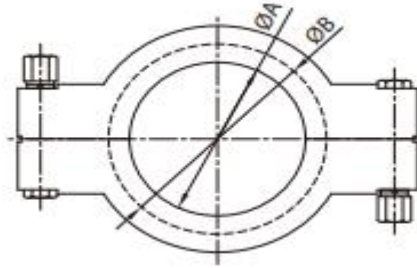
BS4825-PT3 DOUBLE HINGE CLAMPS 304



Size	A	B	Weight (kgs)	Item
1/2"-3/4"	20.00	28.00	0.17	34303
1"-1 1/2"	45.00	53.60	0.20	34304
2"	59.00	72.00	0.25	34305
2 1/2"	67.00	84.00	0.28	34306
3"	85.00	98.00	0.34	34307
4"	114.00	127.00	0.42	34308
5"	144.00	159.00	0.68	34309
6"	157.60	175.10	0.77	34310
8"	207.40	225.90	0.97	34311
10"	257.00	272.00	1.12	34312
12"	308.00	323.00	2.80	34313

Please contact sales team if Dimensions are critical - Dimensions are Indicative

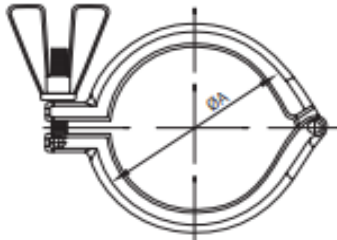
BS4825-PT3 HIGH PRESSURE CLAMPS 304 WITH BRASS NUTS



Size	A	B	NUT	Weight (kgs)	Item
1/2"-3/4"	20.00	28.00	1/4"	0.16	34296
1"-1 1/2"	43.32	52.00	3/8"	0.66	34297
2"	56.44	65.50	3/8"	0.82	34298
2 1/2"	69.50	79.00	3/8"	0.94	34299
3"	77.50	92.50	3/8"	1.02	34300
4"	108.80	120.50	3/8"	1.27	34301
6"	158.00	170.00	3/8"	1.93	34302

Please contact sales team if Dimensions are critical - Dimensions are Indicative

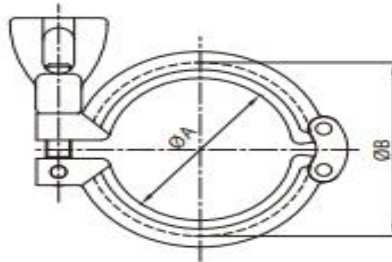
DIN 32676 SINGLE HINGE CLAMPS 304



Size	A	B	Weight (kgs)	Item
DN10/15/20	27	37	0.13	32623

Please contact sales team if Dimensions are critical - Dimensions are Indicative

DIN 32676 DOUBLE HINGE CLAMPS 304



Size	A	B	Weight (kgs)	Item
DIN29-40	45.00	53.60	0.20	34304
DIN50	59.00	72.00	0.25	34305
DIN65	85.00	98.00	0.30	34307
DIN80	99.00	110.00	0.38	44307
DIN100	114.00	127.00	0.42	34308
DIN150	172.00	187.00	0.77	55805

Please contact sales team if Dimensions are critical - Dimensions are Indicative