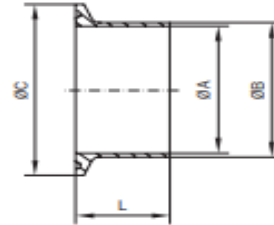


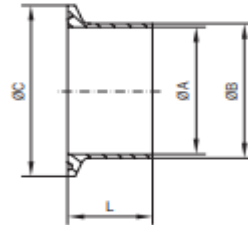
## BS4825-PT3 DAIRY WELDING FERRULE 316L ID Ra ≤0.8



Size	A	B	C	L	Weight (kgs)	Item
1/2"	9.40	12.70	25.00	21.50	0.02	<b>26698</b>
3/4"	15.75	19.05	25.00	21.50	0.02	<b>32062</b>
1"	22.10	25.40	50.50	21.50	0.05	<b>26699</b>
1 1/2"	34.80	38.10	50.50	21.50	0.06	<b>26700</b>
2"	47.50	50.80	64.00	21.50	0.08	<b>26701</b>
2 1/2"	60.20	63.50	77.50	21.50	0.10	<b>26702</b>
3"	72.90	76.20	91.00	21.50	0.13	<b>26703</b>
4"	97.40	101.60	119.00	21.50	0.20	<b>26704</b>
5"	125.00	129.00	144.00	28.00	0.30	<b>32637</b>
6"	150.00	154.00	166.80	28.00	0.38	<b>32638</b>
8"	200.00	204.00	217.60	28.00	0.56	<b>32639</b>
10"	250.00	254.00	268.40	28.00	0.65	<b>32640</b>
12"	300.00	304.00	319.20	28.00	0.81	<b>32641</b>

Please contact sales team if Dimensions are critical - Dimensions are Indicative

## DIN32676 SERIES 2 DAIRY WELDING FERRULE 316L ID Ra ≤0.8



Size	A	B	C	L	Weight (kgs)	Item
10	10.00	13.00	34.00	18.00	0.03	32642
15	16.00	19.00	34.00	18.00	0.03	32643
20	20.00	23.00	34.00	18.00	0.03	32644
25	26.00	29.00	50.50	21.50	0.07	32645
32	32.00	35.00	50.50	21.50	0.08	50890
40	38.00	41.00	50.50	21.50	0.08	32646
50	50.00	53.00	64.00	21.50	0.08	32647
65	66.00	70.00	91.00	28.00	0.19	32648
80	81.00	85.00	106.00	28.00	0.23	32649
100	100.00	104.00	119.00	28.00	0.23	32650
125	125.00	129.00	155.00	28.00	0.32	32651
150	150.00	154.00	183.00	28.00	0.49	32652
200	200.00	204.00	233.50	28.00	0.56	32653

Please contact sales team if Dimensions are critical - Dimensions are Indicative