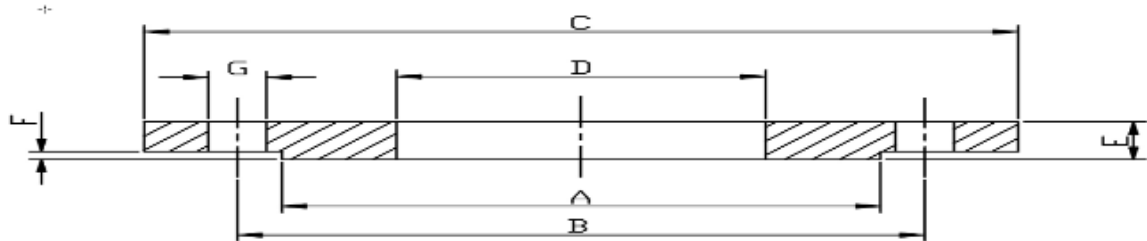


**STAINLESS STEEL FORGED SLIP ON FLANGES  
BORED OD - PN16 TYPE 01B - EN1092-1 - ASTM A182  
RAISED FACE FULL THICK**



| Size   | A      | B      | C      | D      | E     | F    | G     | No of Hole. | 316L         |
|--------|--------|--------|--------|--------|-------|------|-------|-------------|--------------|
| 1"     | 68.00  | 85.00  | 115.00 | 26.90  | 16.00 | 3.00 | 14.00 | 4.00        | <b>29200</b> |
| 1 1/2" | 88.00  | 110.00 | 150.00 | 39.60  | 18.00 | 3.00 | 18.00 | 4.00        | <b>29201</b> |
| 2"     | 102.00 | 125.00 | 165.00 | 52.30  | 19.00 | 3.00 | 18.00 | 4.00        | <b>29202</b> |
| 2 1/2" | 122.00 | 145.00 | 185.00 | 65.00  | 20.00 | 3.00 | 18.00 | 4.00        | <b>29203</b> |
| 3"     | 138.00 | 160.00 | 200.00 | 77.60  | 20.00 | 3.00 | 18.00 | 8.00        | <b>29204</b> |
| 4"     | 158.00 | 180.00 | 220.00 | 103.10 | 22.00 | 3.00 | 18.00 | 8.00        | <b>29205</b> |
| 5"     | 188.00 | 210.00 | 250.00 | 131.00 | 22.00 | 3.00 | 18.00 | 8.00        | <b>29206</b> |
| 6"     | 212.00 | 240.00 | 285.00 | 156.00 | 24.00 | 3.00 | 22.00 | 8.00        | <b>29207</b> |

Please contact sales team if Dimensions are critical - Dimensions are Indicative